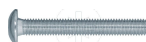
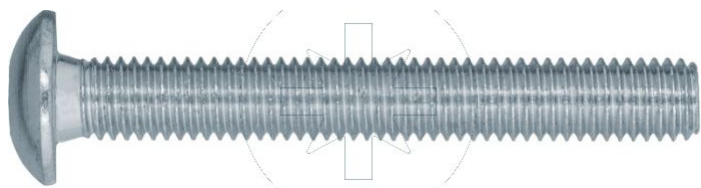


**SEND THE INQUIRY**

+48 58 55 40 410



Class (standard):

4.8

10.9

Class (special order):

8.8

Coating (standard):

**B**

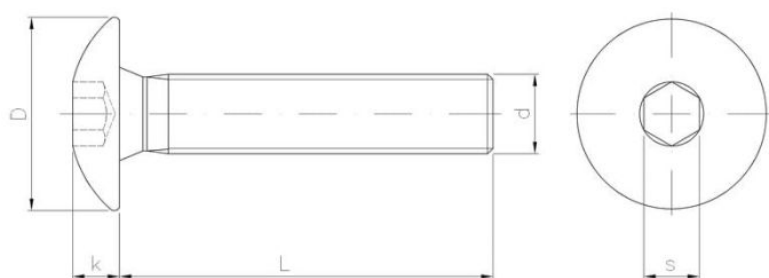
WHITE  
ZINC  
COATING

Coating (special order):

**A**  
YELLOW  
ZINC  
COATING

**C**  
BLACK  
ZINC  
COATING

**N**  
NICKEL  
COATING



## Dimensions

Material index	d	L [mm]	D [mm]	k [mm]	s [mm]	Mechanical properties class	Type of coating
1301060020IM5BT	M6	20	15	4	5	4.8	B (White zinc coating)
1301060040IM5BT	M6	40	15	4	5	4.8	B (White zinc coating)
1301060025IM5BT	M6	25	15	4	5	4.8	B (White zinc coating)
1301080030IM5BT	M8	30	16.5	4.4	5	4.8	B (White zinc coating)