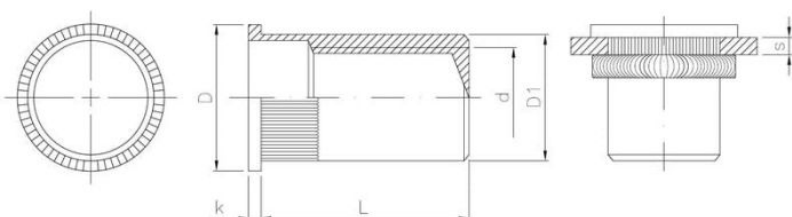




Coating (standard):



WHITE
ZINC
COATING



Dimensions

Material index	d	L [mm]	D [mm]	k [mm]	D1 [mm]	s [mm]
2503060175STZT	M6	17.5	12.3	1.3	8.9	0.5-3.0
2503050160STZT	M5	16.0	10.0	1.0	6.9	0.5-2.5
2503100255STZT	M10	25.5	17.0	1.6	12.9	1.0-4.0
2503080200STZT	M8	20.0	15.0	1.5	10.9	0.5-3.0