

Coating (standard):

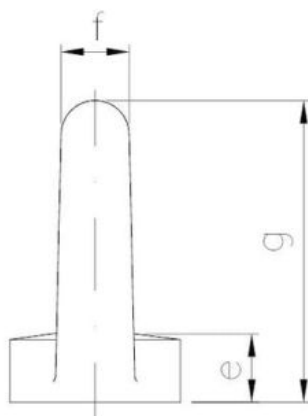
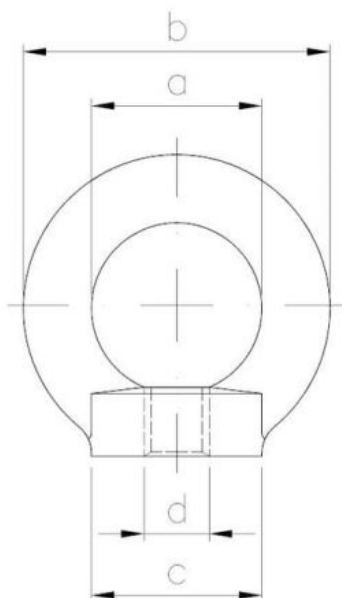
B
 WHITE
 ZINC
 COATING

SEND THE INQUIRY

+48 58 55 40 410

Standards:

DIN 582



Dimensions

Material index	d	a [mm]	b [mm]	c [mm]	e [mm]	f [mm]	g [mm]	Obciążenie znamionowe [kg]
6314080B582S	M8	20	36	20	8.5	8	36	140
6314060B582S	M6	20	36	20	8.5	8	36	90
6314300B582S	M30	60	108	65	25	24	108	3600
6314240B582S	M24	50	90	50	20	20	90	1800
6314270B582S	M27	50	90	50	20	20	90	2500
6314220B582S	M22	40	72	40	16	16	72	1500
6314200B582S	M20	40	72	40	16	16	72	1200
6314160B582S	M16	35	63	35	13	14	63	700
6314180B582S	M18	35	63	35	13	14	63	930
6314120B582S	M12	30	54	30	11	12	54	340

Material index	d	a [mm]	b [mm]	c [mm]	e [mm]	f [mm]	g [mm]	Obciążenie znamionowe [kg]
6314140B582S	M14	30	54	30	11	12	54	490
6314100B582S	M10	25	45	25	10	10	45	230