

SEND THE INQUIRY

+48 58 55 40 410

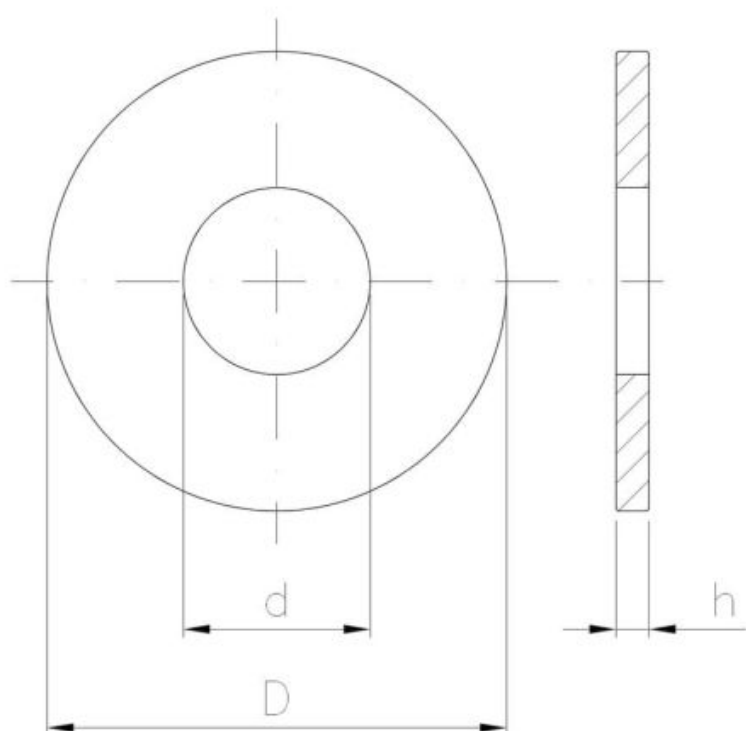
Standards:

DIN 9021
ISO 7093
PN-M 82030



Coating (standard):

Coating (special order):



Dimensions

| Material index | d [mm] | D [mm] | h [mm] | Type of coating | Measure unit |
|-------------------|--------|--------|--------|------------------------|--------------|
| 1403240BD9021K | 25.0 | 72 | 6.0 | B (White zinc coating) | KG |
| 1403300BD9021K | 31.0 | 92 | 6.0 | B (White zinc coating) | KG |
| 1403300BD9021S | 31.0 | 92 | 6.0 | B (White zinc coating) | PCS |
| 1403240720BD9021T | 25.0 | 72 | 5.0 | B (White zinc coating) | THS. |
| 1403200600BD9021K | 22.0 | 60 | 4.0 | B (White zinc coating) | KG |
| 1403200600BD9021T | 22.0 | 60 | 4.0 | B (White zinc coating) | THS. |
| 1403180BD9021K | 19.0 | 56 | 4.0 | B (White zinc coating) | KG |
| 1403120370BD9021T | 13.0 | 37 | 3.0 | B (White zinc coating) | THS. |
| 1403140440BD9021T | 15.0 | 44 | 3.0 | B (White zinc coating) | THS. |
| 1403160500BD9021T | 17.0 | 50 | 3.0 | B (White zinc coating) | THS. |

| Material index | d [mm] | D [mm] | h [mm] | Type of coating | Measure unit |
|-----------------------|---------------|---------------|---------------|------------------------|---------------------|
| 1403160SD9021K | 17.0 | 50 | 3.0 | S (raw product) | KG |
| 1403140BD9021K | 15.0 | 44 | 3.0 | B (White zinc coating) | KG |
| 1403120BD9021K | 13.0 | 37 | 3.0 | B (White zinc coating) | KG |
| 1403160BD9021K | 17.0 | 50 | 3.0 | B (White zinc coating) | KG |
| 1403100300BD9021T | 10.5 | 30 | 2.5 | B (White zinc coating) | THS. |
| 1403100BD9021K | 10.5 | 30 | 2.5 | B (White zinc coating) | KG |
| 1403080220015BK | 8.4 | 22 | 2.0 | B (White zinc coating) | KG |
| 1403080SD9021K | 8.4 | 24 | 2.0 | S (raw product) | KG |
| 1403080240BD9021T | 8.4 | 24 | 2.0 | B (White zinc coating) | THS. |
| 1403080220015BT | 8.4 | 22 | 2.0 | B (White zinc coating) | THS. |
| 1403080220BD9021T | 8.4 | 22 | 2.0 | B (White zinc coating) | THS. |
| 1403080BD9021K | 8.4 | 24 | 2.0 | B (White zinc coating) | KG |
| 1403060SD9021K | 6.4 | 18 | 1.6 | S (raw product) | KG |
| 1403060180BD9021T | 6.4 | 18 | 1.6 | B (White zinc coating) | THS. |
| 1403060BD9021K | 6.4 | 18 | 1.6 | B (White zinc coating) | KG |
| 1403100285015BK | 10.5 | 28.5 | 1.5 | B (White zinc coating) | KG |
| 1403040120BD9021T | 4.3 | 12 | 1.2 | B (White zinc coating) | THS. |
| 1403040BD9021K | 4.3 | 12 | 1.2 | B (White zinc coating) | KG |
| 1403050150BD9021T | 5.3 | 15 | 1.2 | B (White zinc coating) | THS. |
| 1403050BD9021K | 5.3 | 15 | 1.2 | B (White zinc coating) | KG |
| 1403030090BD9021T | 3.2 | 9 | 0.8 | B (White zinc coating) | THS. |
| 1403030BD9021K | 3.2 | 9 | 0.8 | B (White zinc coating) | KG |